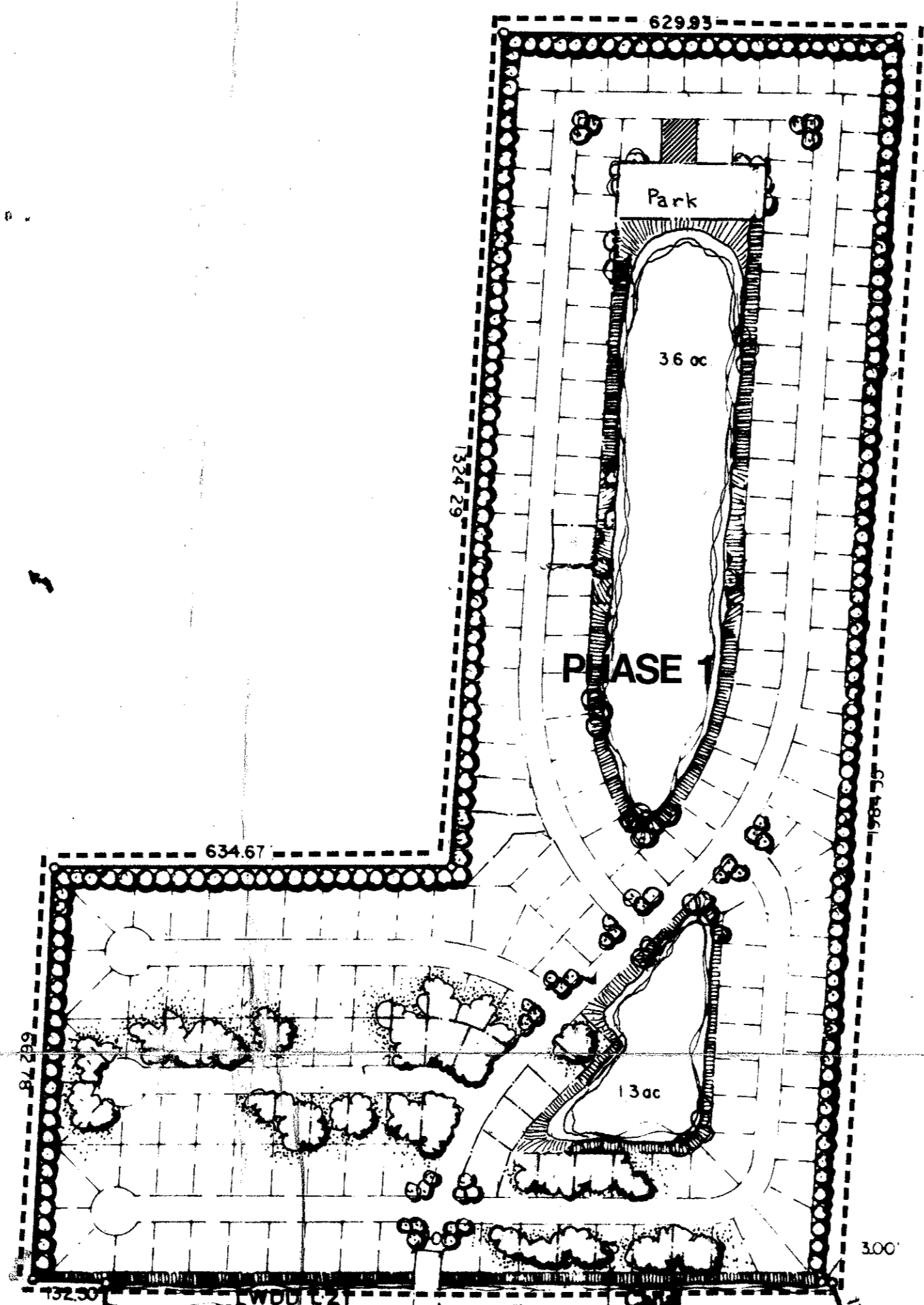


VICINITY SKETCH



Proposed Recreation
(SUNNY SOUTH ESTATES) 6.5 acres

PARK FEATURES:

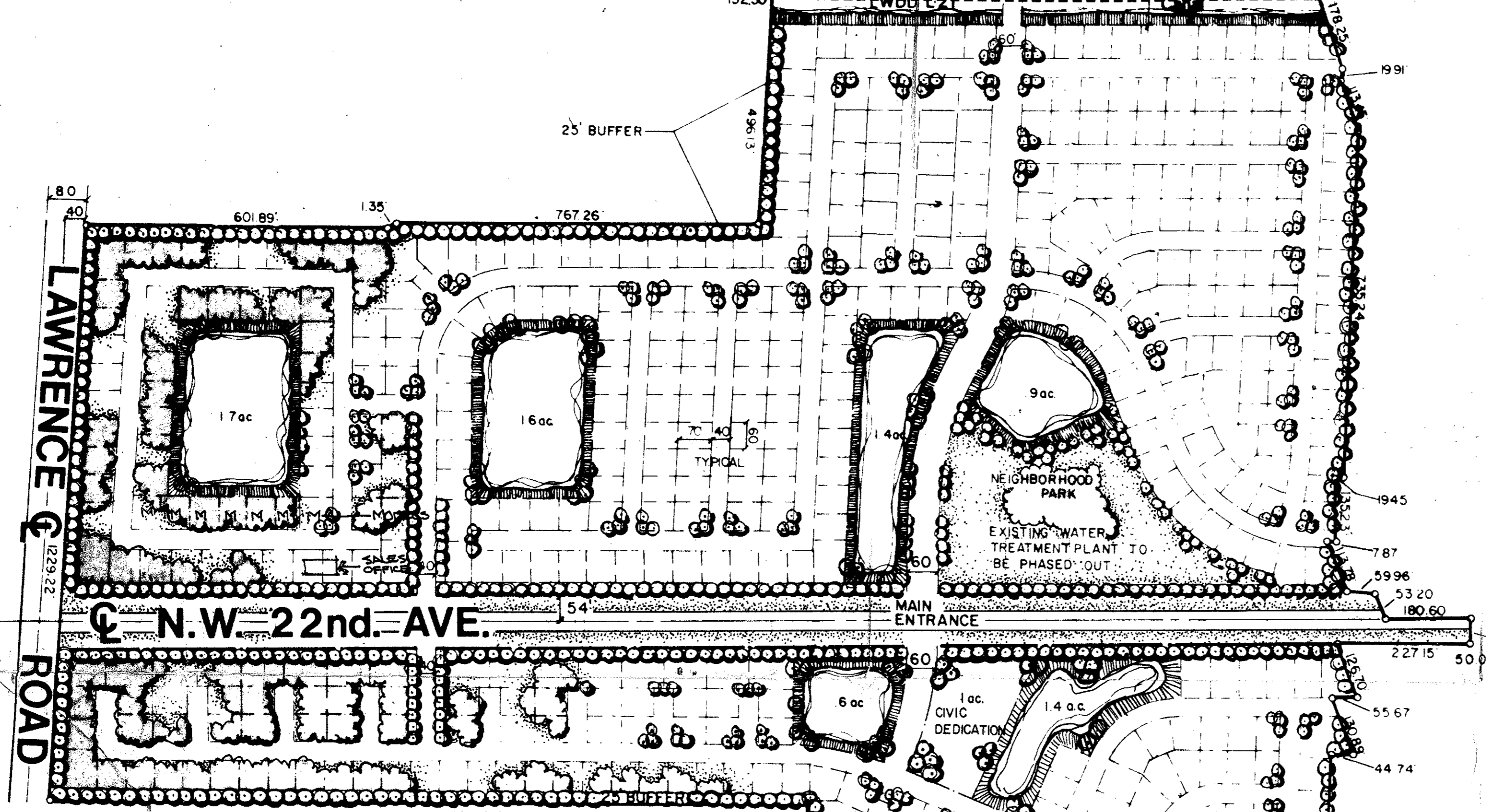
- A. CLUBHOUSE (8000 s.f.) to include:
RECREATION HALL
CARD ROOMS
BILLIARD ROOMS
HOBBY AND CRAFT ROOMS
LAUNDRY ROOM
LOUNGE
FULL KITCHEN
WASHROOM FACILITY
SAUNA
- B. SHUFFLEBOARD COURTS
- C. TENNIS COURTS
- D. 2 FULL SIZE SWIMMING POOL
- E. PICNIC AND GARDEN AREAS

Existing Recreation

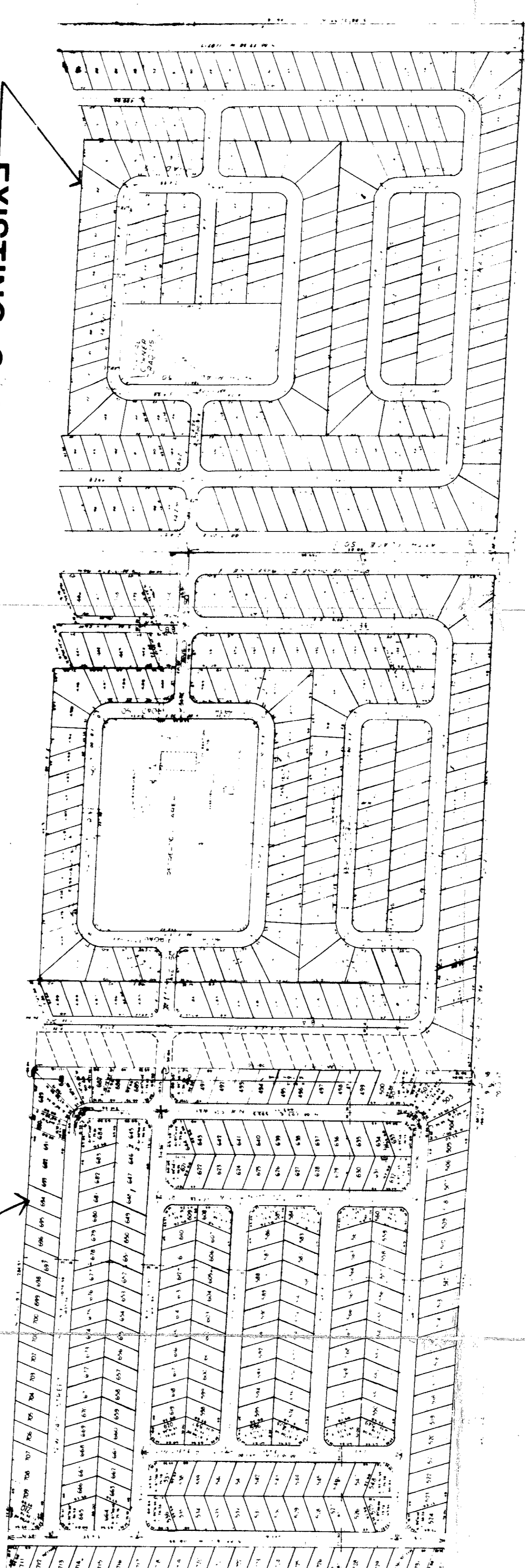
(SAND AND SEA) 1.8 acres (North of N.W. 22nd. ave.)

PARK FEATURES:

- A. CLUBHOUSE to include:
KITCHEN FACILITY
MEETING HALL
BILLIARD ROOM
CARD ROOM
LAUNDRY FACILITY
LOUNGE AREA
WASHROOM FACILITY
SAUNA
- B. SHUFFLEBOARD COURTS
- C. LARGE SIZE SWIMMING POOL
- D. GARDEN AREA



EXISTING SAND & SEA MOBILE HOME PARK



MATCH LINE

Existing Recreation

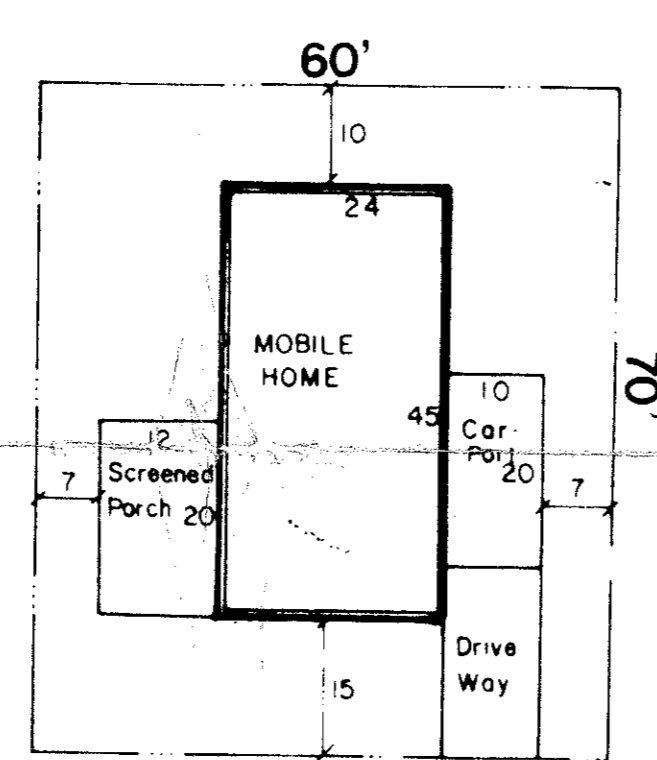
(SAND AND SEA) 4.7 acres (South of N.W. 22nd. ave.)

PARK FEATURES:

- A. CABANA to include:
LAUNDRY FACILITY
WASHROOM FACILITY
- B. LARGE SIZE SWIMMING POOL
- C. CHILDRENS AREA/ TOT LOT
- D. LIGHTED BASEBALL DIAMOND
- E. TENNIS COURTS

site data

	PROPOSED
MOBILE HOME LOTS	783
TOTAL SITE AREA	155.16 ac.
GROSS DENSITY	5.05 du/ac.
R/W DEDICATIONS	
ROAD	7.31 ac.
CANAL	.44 ac.
OPEN SPACE	
NEIGHBORHOOD PARK	3.39 ac.
PERIMETER BUFFER	9.49 ac.
RETENTION AREAS	13.4 ac.
TYPICAL LOT SIZE	60' wide x 70' deep
INTERIOR ROAD R/W	30530 l.f.
CIVIC DEDICATION	1 ac.



TYP. LOT DETAIL
1"=20'

site data

	EXISTING	TOTAL
MOBILE HOME LOTS	608	1391
TOTAL SITE AREA	94.55 ac.	2497 ac.
GROSS DENSITY	6.4 du/ac.	5.57 du/ac.
R/W DEDICATIONS		
ROAD	0 ac.	7.31 ac.
CANAL	0 ac.	.44 ac.
OPEN SPACE		
NEIGHBORHOOD PARK	6.5 ac.	9.9 ac.
PERIMETER BUFFER	0 ac.	9.49 ac.
RETENTION AREAS	0 ac.	13.4 ac.
TYPICAL LOT SIZE	49 wide x 87 deep	N/A
INTERIOR ROAD R/W	21300 l.f.	51830 l.f.
CIVIC DEDICATION	0 ac.	1 ac.

10/20/80
17A
15A

SUNNY SOUTH ESTATES
palm beach county, florida

Date prepared: 11-12-80
H. Smith
C. Keefe
R. C. Smith

